

PEAT
LAND
INNO
VATION
PRO
GRAMME
NETHER
LANDS

VIPNI

Innovations
for future-proof
peatlands



COLOFON

© 2023, VIPNL

www.vip-nl.nl

Cover photo: Tineke Hoekstra

Text and other photos: VIPNL

Map, page 5: 'Vision for climate-proof peat landscapes' - Altenburg & Wymenga ecological research + Bureau Peter de Ruyter landscape architecture, in collaboration with Atelier des Hollants.

Vormgeving: JoStudio

INNOVATIONS FOR FUTURE-PROOF PEATLANDS

The national climate goals set concrete tasks for our country in the coming decades. Dutch peatlands emit around five million tonnes of greenhouse gases annually, amounting to 2 to 3% of our country's total annual CO₂ emissions.

The Climate Agreement stipulates that sustainable land use in the peatland regions must reduce emissions by 1 megaton each year in the short term – by 2030. The longer-term perspective (2050) is set down in Regional Peatland Strategies. In addition to the climate challenge, the peatland areas face other major challenges, such as:

- curbing subsidence;
- dealing with water shortages and flooding;
- restoring biodiversity;
- making agriculture more sustainable;
- realising viable business operations for land users.

With this challenges in mind, the **Netherlands Peatland Innovation Programme** (VIPNL) was launched in 2022. The objective of VIPNL is to achieve the development of sustainable and scalable forms of land use that still enable operations to be profitable. In the short term VIPNL is focused on practical

measures. In the long term, VIPNL aims to achieve innovations in land use. The combination of short-term and long-term goals should result in the perspectives of the Regional Peatland Strategies being realised.



VIPNL IN 10 BULLETS

- 1** VIPNL = Veenweiden Innovatie Programma Nederland (Netherlands Peatland Innovation Programme).
- 2** VIPNL resulted from a peatland regions initiative to act together, and the Ministry of Agriculture, Nature and Food Quality's wish to organise a national consortium for innovations.
- 3** VIPNL is a national peatland programme, in which entrepreneurship takes centre stage and implementation is carried out in the regions.
- 4** VIPNL arose from the challenge of reducing emissions by one Megaton CO₂-equivalent by 2030, as set out in the Climate Agreement. VIPNL is re-researching the (types of) measures that are effective for achieving this goal.
- 5** VIPNL therefore conducts activities along four innovation tracks.
- 6** VIPNL's ambition is to add other themes in the coming years, in order to launch as many innovations as possible.
- 7** Each living lab is able to make its own decisions on which themes are needed and to what extent.
- 8** Each region decides for itself whether to participate in a national theme, and takes part in national research where required.
- 9** Innovations are usually implemented in so-called living labs, based on the themes.
- 10** VIPNL is supported and carried out by programme partners that take joint responsibility for VIPNL's implementation, both financially and content-wise. The initial programme partners (as of 1 December 2021) are the Peat Meadow Innovation Centre (Veenweiden Innovatiecentrum or VIC) and Landschap Noord-Holland (LNH). Other programme partners will be added over time.

INNOVATION TRACKS

Innovations in the areas of water, soil, land use and integrated business management are needed in order to achieve the goal in both the short term and the longer term. VIPNL therefore conducts activities along these four innovation tracks.

The central ambition is vibrant and responsible entrepreneurship in the peatland regions. In order to realise this, living labs' work together on national themes. VIPNL uses the results from these testing grounds to cluster promising initiatives. This will create connections between regional innovations and deliver input to regional and national policy-makers. The resulting insights will be delivered to those who need them: entrepreneurs and policy-makers.

The water and soil innovation tracks are primarily important for steering from the authorities and water boards. The land use and integrated business management tracks are mainly applicable to entrepreneurs. In this approach, the regions themselves take the initiative for themes.

To facilitate this, testing ground leaders have been appointed for each region. Roel van Gerwen (roel@vip-nl.nl) is the national point of contact on behalf of the testing ground leaders. VIPNL is responsible for national co-ordination and disseminates knowledge, thus helping to prepare regional innovations for implementation in practice.

FOUR INNOVATION TRACKS WITH VARIOUS THEMES



VARIOUS THEMES

Each of the innovation tracks is divided into a number of themes. Themes are developed to fit the specific situation. Some themes result in large programmes, while others are small. Within the four tracks, in 2022 the following themes will be the first to be implemented in living labs:

FOUR THEMES ARE ALREADY UNDERWAY...

A

CLAY IN PEAT

B

WET CROPS

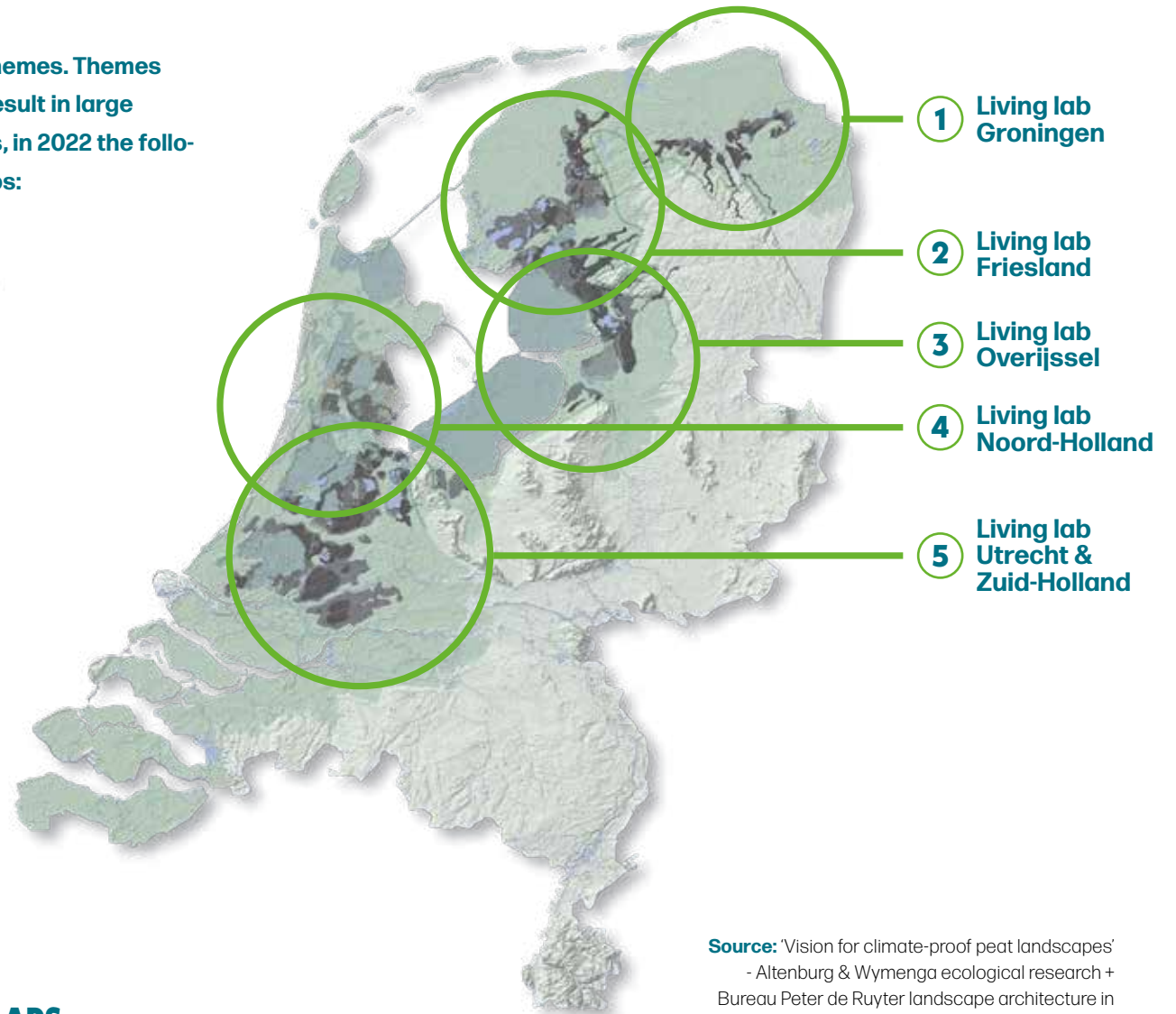
C

FARMING IN HIGH WATER TABLE AREAS

D

PEAT MOSS

... IN LIVING LAPS



Source: 'Vision for climate-proof peat landscapes'
- Altenburg & Wymenga ecological research +
Bureau Peter de Ruyter landscape architecture in
collaboration with Atelier des Hollants.

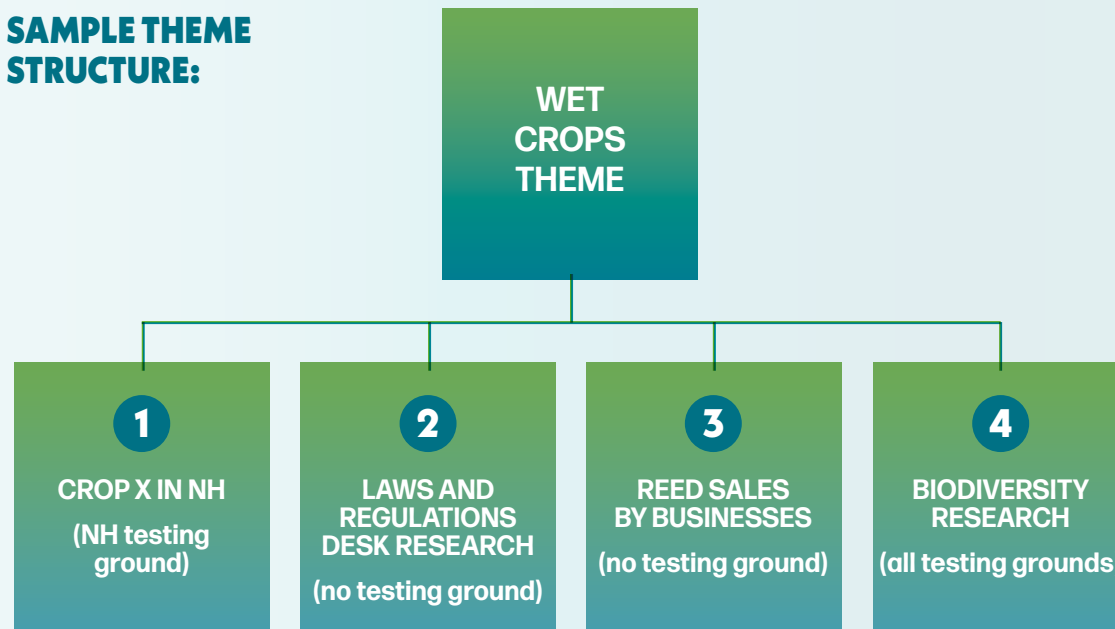
THEME STRUCTURE

The themes will be implemented within a dynamic programme. Part of the implementation consists of sub-projects such as pilots, innovations, and desk research that, collectively, contribute to the theme's goal.

Implementation will take place in the living labs and will be set out in an Action Plan. The funding of the implementation is different for each theme: sometimes nationally through the Dutch Ministry of Agriculture, Nature and Food Quality, and sometimes regionally/locally through co-financing. In the implementation, VIPNL also seeks to forge links with national programmes, such as the Dutch National Research Programme on Greenhouse Gases in Peatlands (NOBV), to promote the development and exchange of knowledge.



SAMPLE THEME STRUCTURE:



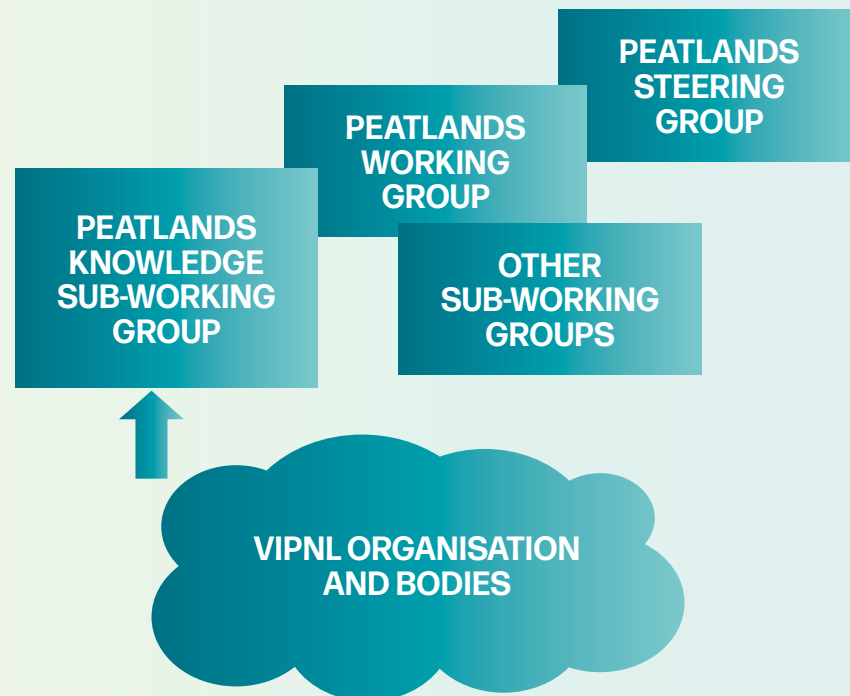
NETHER
LANDS

CONNECTIONS WITH THE PEATLANDS APPROACH

The Peatlands Steering Group adopted VIPNL as a knowledge and innovation agenda. The Steering Group is the administrative principal of the national Peatlands Approach.

The Knowledge Sub-Working Group supervises VIPNL's implementation in terms of content. The Steering Group advises on the new themes that VIPNL takes on. The diagram below illustrates their interrelationships.

CONNECTIONS WITH THE PEATLANDS APPROACH



CONTACT

Would you like to register a project?

Contact Roel van Gerwen at roel@vip-nl.nl.

Would you like to know more about VIPNL?

Visit www.vip-nl.nl (in Dutch) or contact one of the testing ground leaders:

Proeftuin Groningen: Hetty Mathijssen, hetty@vip-nl.nl

Proeftuin Friesland: Nico Viersen, nico@vip-nl.nl

Proeftuin Overijssel: Riek van der Harst, riek@vip-nl.nl

Proeftuin Noord-Holland: Roel van Gerwen, roel@vip-nl.nl

Proeftuin Utrecht & Zuid-Holland: Tim Selders, tim@vip-nl.nl



PEAT
LAND
INNO
VATION
PRO
GRAMME
NETHER
LANDS

VIPNL

WWW.VIP-NL.NL